

wallbox 

Pulsar Pro  
You're a  
**PRO**  
It's a  
Pro



The ultimate EV charger  
for shared spaces,  
**made for Pros like you.**



Built for Businesses and EV drivers alike, Pulsar Pro is the new shared charging solution designed to fit perfectly with condominiums, workplaces and fleets. It's a reliable, accessible charger for users and an easy-to-manage, cost-effective solution for charge point operators and installers.



## PULSAR PRO

# What's in it for your business?



### FASTER INSTALLATION

- **Pre-configured 4G** provides out-of-the-box installation, reducing commissioning time and potential errors.
- **3rd-party 4G & OCPP factory configuration** available as an option to reduce installation time.
- **Backplate design** to make installation easier than ever.



### COST OPTIMIZATION

- **Dynamic Power Sharing up to 100 chargers** translates into more energy efficiency and lower costs.
- **Internal meter with less than 2% error** improves accuracy of energy transfers.\*
- **Integrated PEN fault protection** eliminates the need for an earthing rod.\*\*

\*Factory calibrated. Subject to local regulations.  
\*\*UK only

## 4G

### IMPROVED SERVICE & MAINTANENCE

- **4G connectivity** ensures remote software updates.
- **Enhanced Security** prevents unauthorized manipulation, physical damage and cyber-attacks.
- **Charging cable** can be easily replaced in case of damage.



### REMOTE MANAGEMENT

- **myWallbox business** enables charger management, payments, user access, reporting and more.
- **OCPP compatible** to integrate into any backend.
- **Partner API** available for custom integrations.\*

\*Contact your sales representative for more information.

PULSAR PRO

## What's in it for the end-user?



### RELIABLE

- **4G** to enjoy full connectivity, minimal interruptions and increased uptime.
- **Robust design** protects against extreme weather, water, dust and impact.
- **Advanced CPU** for higher processing speeds and performance.



### EASE OF USE

- **Attractive and compact design** with intuitive Halo Light to show charging status.
- **Easy authentication and payment** with RFID, NFC\* and myWallbox App.

\*HW ready. Contact your sales representative for more information.



### PEACE OF MIND

- **Encrypted communication** that protects personal data.

### ENERGY MANAGEMENT

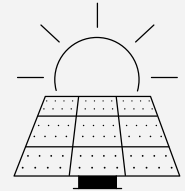
## Compatible with all Wallbox Energy Management Solutions

Solutions that maximize savings and support growing charging networks.

### ECO-SMART

#### Solar EV Charging

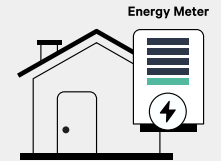
Use the surplus energy from a building's solar panels to avoid high grid energy prices. Charge with 100% solar energy or a mix of solar and grid energy.



### POWER BOOST

#### Dynamic Load Balancing for Single EVs

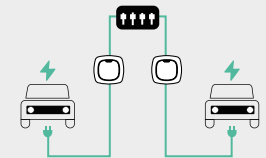
Charge at the highest speed possible, depending on the building's real-time energy use, without having to upgrade the electrical infrastructure.



### DYNAMIC POWER SHARING

#### Dynamic Load Balancing for Multiple Vehicles

Scale your charging infrastructure without expensive electrical retrofits. Intelligently distribute energy now up to 100 chargers.



**Ask your sales representative how you can upgrade your smart charging system today.**

Power meter required  
Eco-Smart not compatible with Power Sharing and OCPP





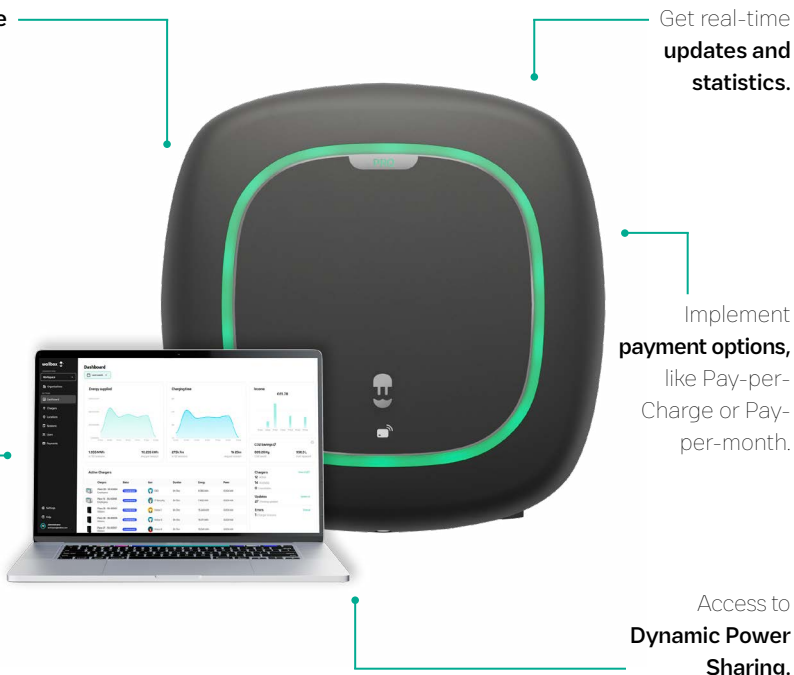
## MYWALLBOX PORTAL

# Includes the myWallbox Business license

The one-stop platform for managing any charging network.

Manage **multiple users** chargers and locations.

Open up your network for **public use.**



## PULSAR PRO

# Technical Specifications

### General specifications

Model	Pulsar Pro
Colour	Black & Grey
Cable Length	5m / 7m
Charging Mode (IEC 61851-1)	Mode 3
Dimensions	198mm x 201mm x 99mm (without cable)
Weight	1.3kg (without cable)
Operating temperature	-30°C to +50°C
Storage temperature	-40°C to +70°C
Regulatory information	CE, UKCA, EAC and RCM Mark. IEC 61851-1, IEC 61851-21-2, IEC 62196, BS 7671, IEC 60364. RED Directive 2014/53/EU and RoHS Directive 2011/65/EU Compliant with UK regulations on smart charging

Cybersecurity	Tamper detection, secure update, secure boot, secure storage & encrypted communications
Charging power	7.4kW / 11kW <sup>[1]</sup> / 22kW
Rated Voltage AC ± 10%	230V / 400V
Rated Current	32A (1P) / 32A (3P)
Connector Type (IEC 62196)	Type 2
Cable Width	up to 13mm <sup>2</sup>
Configurable Current	from 6A to rated current
Rated Frequency	50Hz / 60Hz
Protection Rating	IP55 / IK10
Surge Category	CAT III
Residual Current Detection	DC 6mA
RCD	RCD Type A is required <sup>[2]</sup>
Internal metering	Class A (Error ≤ 2%). Factory calibrated

[1] Limited by Software. [2] According to local regulations. [3] Power meter required

### User interface & Communications

Connectivity	4G, WiFi, Bluetooth
User Identification	RFID, myWallbox App & Portal
User interface	myWallbox App & Portal
External communication interface	OCPP, partner API and SDK
Charger Status Information	Halo RGB LED, myWallbox App & Portal
Included Features	Schedules, Statistics, lock/unlock/autolock, charger remote control, User Management, Pay per Month, Pay per charge, Power Sharing
Optional features <sup>[3]</sup>	Power Boost, Dynamic Power Sharing, Eco-Smart, External MID
HW ready features	NFC



Want to learn more about Pulsar Pro?

Contact us: [sales@wallbox.com](mailto:sales@wallbox.com)



Pro  
Pulsar  
Pro  
Pulsar  
Pro

**wallbox** ™ Get in charge

Pulsar  
Pro  
Pulsar  
Pro

[www.wallbox.com](http://www.wallbox.com)

Copyright 2023, Wallbox Chargers S.L.