

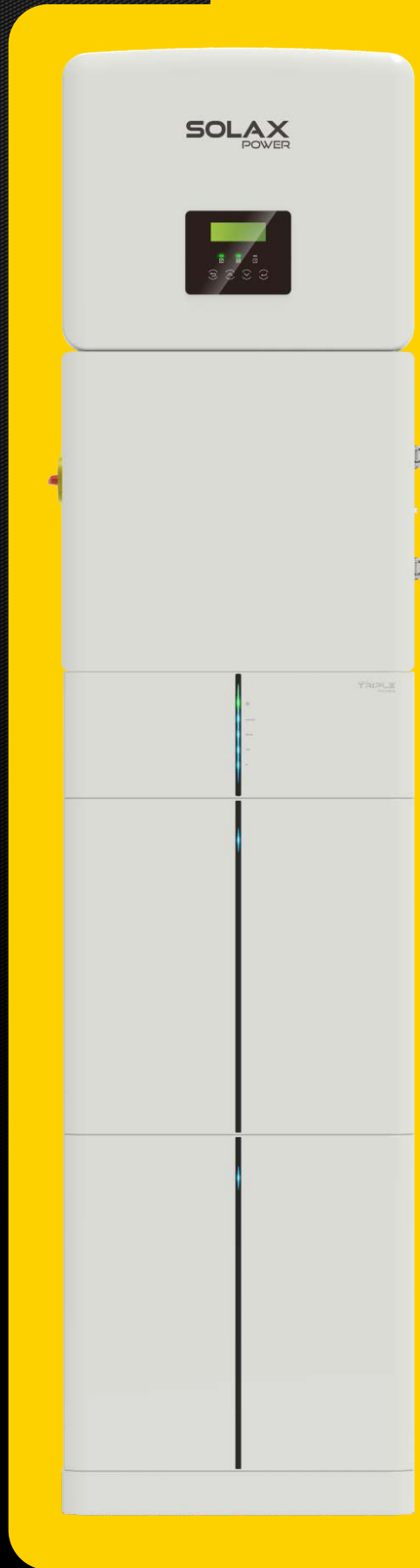


The 4th Generation Energy Storage System from Solax

# X-ESS G4

SMARTER DESIGN  
SMARTER ENERGY

[www.solaxpower.com](http://www.solaxpower.com)





# X-ESS G4



## SUPPORT 150% OVERSIZED PV POWER STORE EXCESS ENERGY TO BATTERY

SolaX's new X-ESS G4 can help you 100% usage of your daily solar energy with excess energy being stored in the Triple Power batteries for night or backup use.



## HIGH RELIABILITY

Stable performance in harsh environment

- \* Passed the HALT test
- \* Extreme high and low temperature test
- \* Salt spray test
- \* Aging test with full working load



## ELEGANT DESIGN

All-in-one home energy system  
Blends in beautifully



## 1 PERSON 30 MINUTES INSTALLATION

Faster and easier installation



## FAST BATTERY CHARGING SPEED

X-ESS G4 only takes ONE hour to fully charge the Triple Power battery.  
With the shorter charging time, you can store more power in the same time period.



## WORKING UNDER EXTREMELY COLD

Working in full load under extreme cold weather -30°C / -22°F

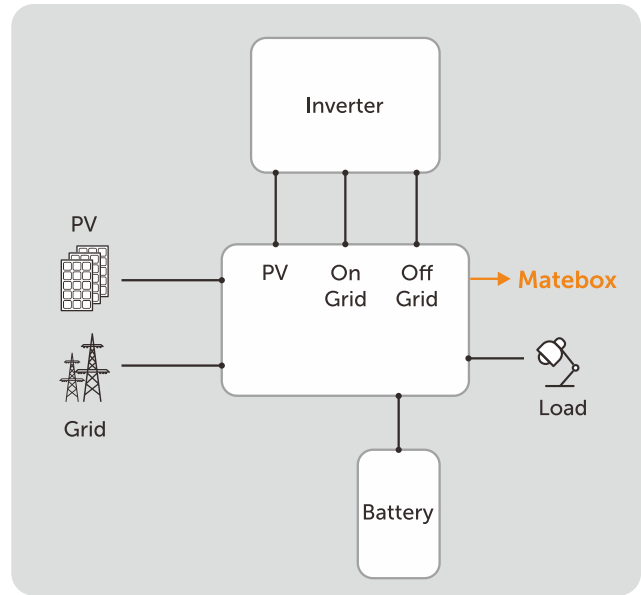
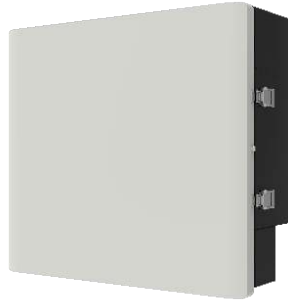


# X1-Hybrid G4

	X1-Hybrid-3.0	X1-Hybrid-3.7	X1-Hybrid-5.0	X1-Hybrid-6.0	X1-Hybrid-7.5
<b>INPUT (DC)</b>					
Max.PV array power [Wp]	4500	5500	7500	9000	10000
Max.DC voltage [V]			600		
Nominal DC operating voltage [V]			360		
Max. input current (input A/input B) [A]			14/14		
Max. short circuit current (input A/input B) [A]			16/16		
MPPT voltage range[V]			70-550		
Start operating voltage[V]			90		
No. of MPP trackers/Strings per MPP tracker			2/1		
<b>INPUT AC</b>					
Max. apparent AC power[VA]	6300	7360	9200	9200	9200
Max. AC current[A]	27.4	32	40	40	40
Nominal grid voltage(AC voltage range)[V]			220/230/240(180-270)		
Nominal grid Frequency/range[Hz]			50/60		
<b>OUTPUT AC</b>					
Nominal AC power [VA]	3000	3680	5000	6000	7500
Max. apparent AC power [VA]	3300	3680	5500(4600for DE 4999for AU)	6600	7500
Nominal grid voltage(AC voltage range) [V]			220/230/240(180-270)		
Nominal grid frequency/range [Hz]			50/60		
Max. AC current [A]	14.4	16	23.9(20 for DE/21.7 for AU)	28.6	32.6
Displacement power factor			0.8 leading...0.8 lagging		
THDi, rated power [%]			<2		
<b>OUTPUT DC (BATTERY)</b>					
Battery type			Li-ion / lead-acid		
Battery voltage range [V]			80-480		
Max.continuous charge/discharge current [A]			30		
Communication interfaces			CAN/RS485		
Reverse connect protection			Yes		
<b>OFF-GRID OUTPUT (WITH BATTERY)</b>					
MAX. continuous apparent power [VA]	3000	3680	5000	6000	7500
Rated voltage[V],Frequency [Hz]			230, 50/60		
MAX.continuous current [A]	13	16	21.7	26.1	32.6
Peak apparent power (rated)[%], Duration[s]			120% overload , 600		100%
Switching time [ms]			internal switch <10, external switch <100		
THDv, linear Load [%]			<2		
<b>EFFICIENCY</b>					
MPPT efficiency [%]			99.9		
Euro efficiency [%]			97.0		
Max. efficiency [%]			97.6		
Battery charge/discharge efficiency [%]			97.0/97.0		
<b>POWER CONSUMPTION</b>					
Standby consumption (Night) [W]			<3		
<b>STANDARD</b>					
Safety			IEC62109-1 / IEC62109-2		
EMC			EN 61000-6-1:2007/EN 61000-6-2:2005/EN 61000-6-3/EN 61000-6-4/EN61000-3-2/EN61000-3-3/EN61000-3-11/EN61000-3-12		
Certification			VDE 0126-1-1 A1:2012 / VDE4105:2018 /G99 /G98 / AS4777 / EN50549/ CEI 0-21 /RD661/RD1699/UNE206007-1/VDE0216/VFR2019		
<b>ENVIRONMENT LIMIT</b>					
Degree of protection(according to IEC60529)			IP65		
Operating temperature range [°C]			-35..... +60°C (derating at +45°C)		
Max. operation altitude [m]			<3000		
Humidity [%]			0~100 (no condensing)		
Storage temperature [°C]			-40..... +70°C		
Typical noise emission [dB]			<30		
<b>DIMENSION AND WEIGHT</b>					
Dimensions(WxHxD) [mm]			482*417*181		
Weight[kg]			22		23
Cooling concept			Natural cooling		Forced airflow
Topology			Non-isolated		
Communication interfaces			CT/Meter/External control RS485/Indoor LCD/Pocket Series(optional)/DRM/USB Upgrade		
LCD display			Yes		
Standard warranty [years]			10		

# Matebox

For the new X-ESS G4, we get rid of the complicated wiring work by laying all the wires in the Matebox. All you need to do is just to install one module on the top of another, and connect all the cables which are already well-sorted in the Matebox in different ports.



X1-Matebox

<b>PV</b>	
Max. input voltage [Vdc]	600
Max. short circuit current [A]	16/16
No. of MPP trackers	2
<b>BATTERY</b>	
Battery voltage range [V]	80-480
Max.charge/discharge current [A]	30
<b>ON-GRID</b>	
Rated voltage [Vac], frequency [Hz]	220/230/240, 50/60
Max. apparent on-grid input/output power [VA]	7500
Max. on-grid current [A]	32.6
<b>OFF-GRID</b>	
Rated voltage [Vac], frequency [Hz]	230, 50/60
Rated power [VA]	7500
Rated current [A]	32.6
<b>GRID</b>	
Rated grid voltage [Vac], frequency [ Hz]	220/230/240, 50/60
Max. input current [A]	60
<b>LOAD</b>	
Rated voltage [Vac], frequency [Hz]	220/230/240, 50/60
Max. current [A]	60
<b>ENVIRONMENT LIMIT</b>	
IP class	IP65
Protection class	Class I
Operating temperature range [°C]	-35..... +60°C (derating at +45°C)
Storage temperature [°C]	-40..... +70°C
Humidity [%]	0~100 (condensing)
Altitude[m]	<3000
Over voltage category	III(AC), II(DC)
<b>OTHER</b>	
Cooling concept	Natural
<b>DIMENSION AND WEIGHT</b>	
Dimensions [mm]	482*437*185
Net weight [kg]	10

# Triple Power 3.0 Battery

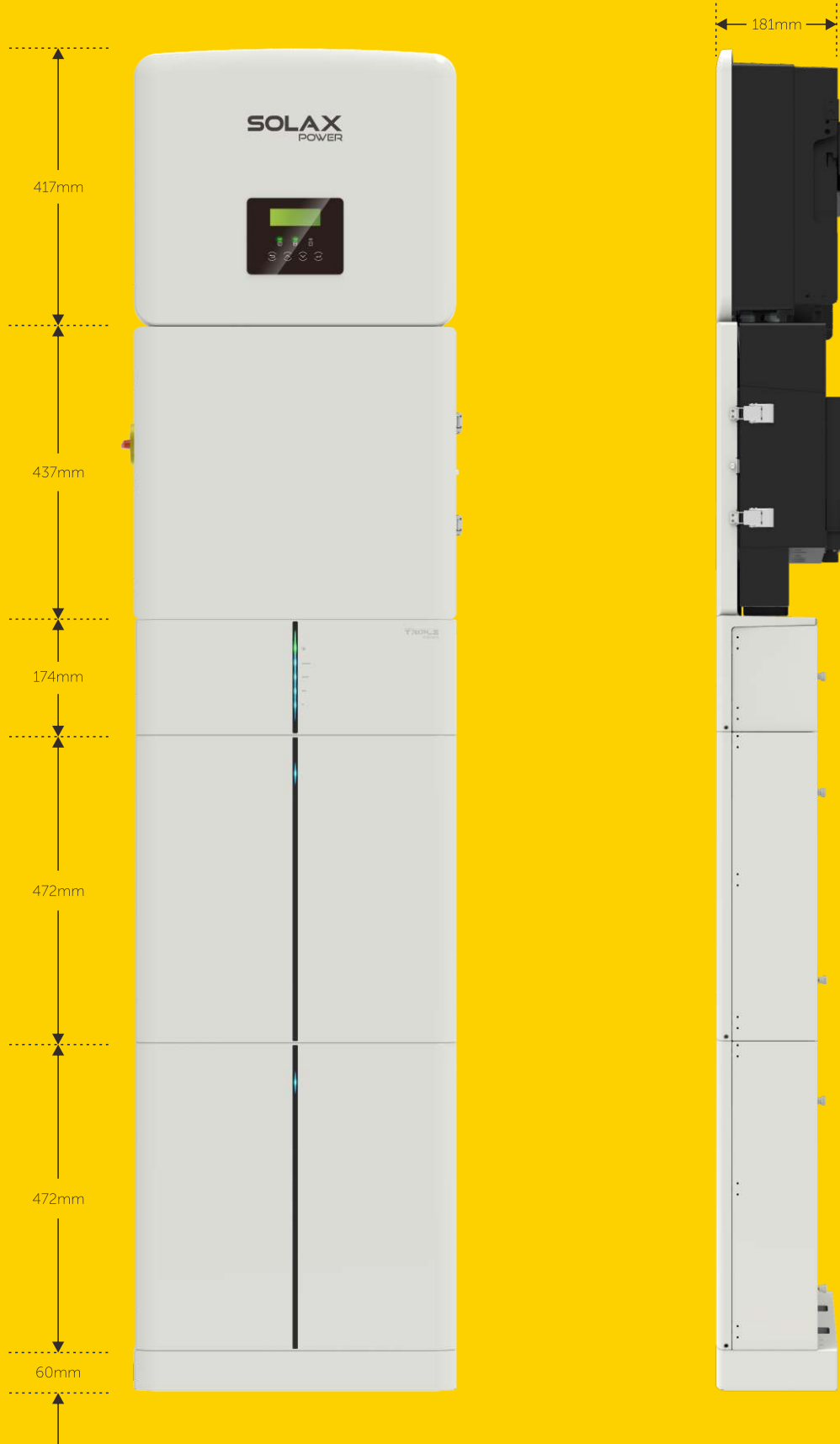
- Safest LiFePO<sub>4</sub> battery (30 Ah)
- Working temperature range: -30~50°C
- Smart temperature balancing
- Cycle life>6000 times
- IP67 protection level
- Less self consumption
- Quick installation
- No toxic heavy metals or caustic materials



	T-BAT H 3.0	T-BAT H 6.0*	T-BAT H 9.0*	T-BAT H 12.0*
Nominal Voltage [V]	102.4	204.8	307.2	409.6
Operating voltage range [V]	90-116	180-232	270-348	360-464
Total energy [kWh]	3.1	6.1	9.2	12.3
Usable energy [kwh]	2.79	5.49	8.28	11.07
Rated Capacity [Ah]			30	
Standard power [kW]	2.55	5.1	7.65	10.2
Max power [kW]	3.1	6.1	10.2	12.3
Recommend charge/discharge current [A]			25	
Maxcharge/discharge current [A]			30	
Faradic charge efficiency			99%	
Battery roundtrip efficiency			95%	
Cycel life [90% DOD]			6000 Cycles	
Expected life time / Warranty [year]			10	
Available charge/discharge temperature range [°C]			-30 to 50	
Storage temperature [°C]		-20 to 55 (3 months)	0 to 40 (1 year)	
Humidity [%]			0~100	
Altitude [m]			Below 4000	
Protection			IP67	
System to Inverter			RS485/CAN2.0	
Battery to battery/BMS			CAN2.0	
Master LED indicator			4LED (25%, 50%, 75%, 100%), 1LED (working mode)	
System Switch (on/off)			Button*1+Breaker*1	
Safety Certificate			CE/TUV Mark/IEC62619/IEC62040/IEC60529	
EMC			61000-6-1/2/3, 61000-3-2/3	
UN number			UN3840	
Hazardous materials classification			Class 9	
Transport testing requirement			UN38.3	
Dimensions(LxWxH) [mm]	MC0600: 482*174*148 HV10230: 482*472*148	MC0600: 482*174*148 HV10230: 482*472*148	MC0600: 482*174*148 HV10230: 482*472*148	MC0600: 482*174*148 HV10230: 482*472*148
Weight [kg]	MC0600: 7.5kg +HV10230: 33kg	MC0600: 7.5kg +2*HV10230: 66kg	MC0600: 7.5kg +3*HV10230: 99kg	MC0600: 7.5kg +4*HV10230: 132kg

\* MC0600:Battery BMS (one MC0600 can be connected 1~4 HV10230)

\* HV10230:Battery Pack

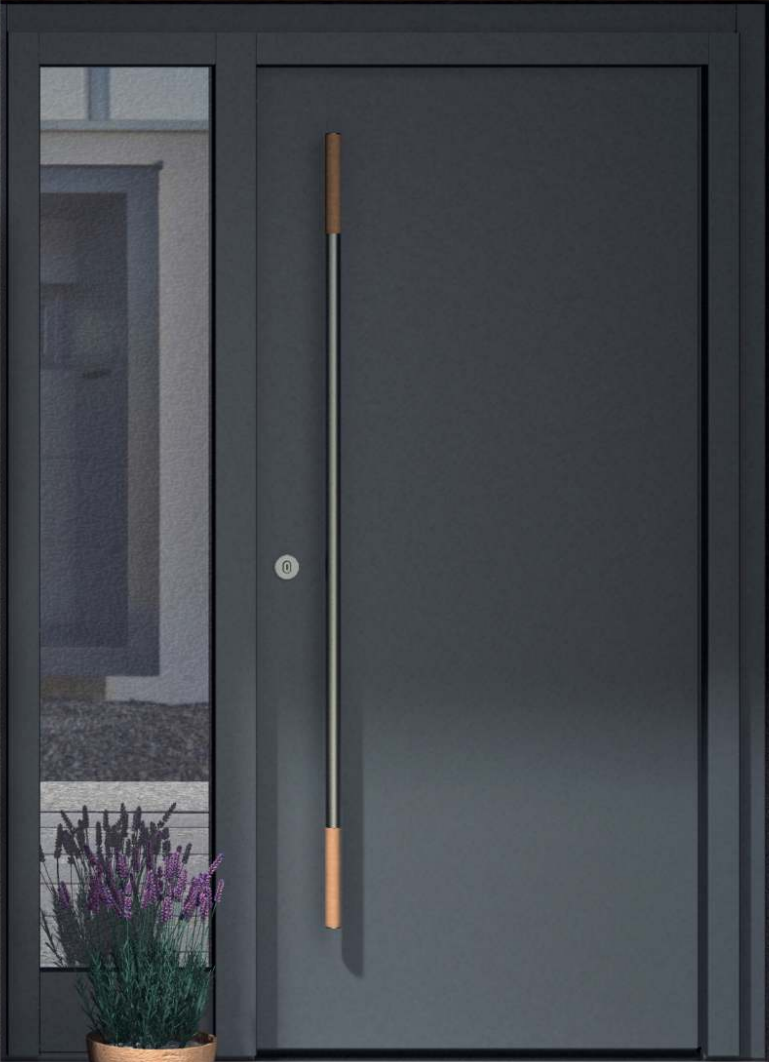




**SOLAX**  
POWER



PHOTO







## Solar Energy Storage Expert

Global: +86 571-56260008

AU: +61 1300 476529  
DE: +49 (0) 6142 4091664

UK: +44 2476 586998  
NED:+31 (0) 852 737932

 [www.solaxpower.com](http://www.solaxpower.com)  
 [info@solaxpower.com](mailto:info@solaxpower.com)