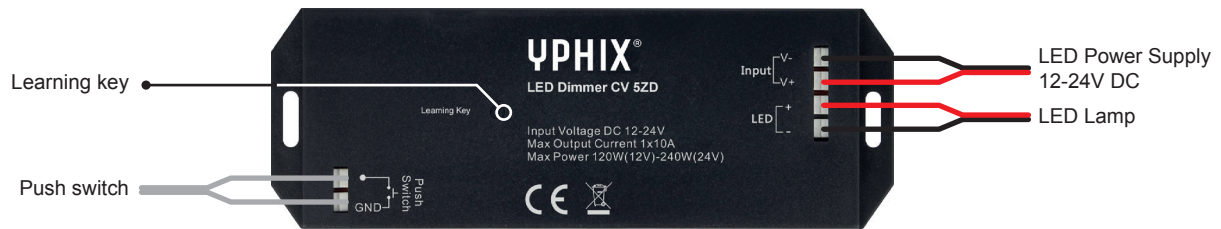


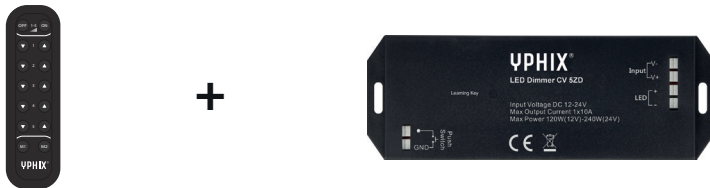
One or more LED receivers CV 5ZD can be controlled with one RF remote and/or a push switch. Program multiple receivers up to 5 different zones. If applicable, more than one receiver can be linked to a zone. With only one click all receivers can be switched on/off simultaneously.

Specifications:

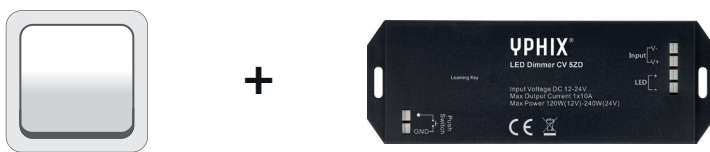
- LED receiver 12V or 24V
- Controlled by: RF remote (up to 25 meters) and/or push switch
- Control multiple receivers with one remote control (separately or simultaneously)
- 1- 5 zones
- 2 memory keys
- 100 % dimmable in 255 steps
- Input: max. 10A
- Output : max. 120W (12V), 240W (24V)



Option 1. Control LED receiver CV 5ZD with an RF remote RF remote (Product code: 50208610)



Option 2. Control LED receiver CV 5ZD with a push switch (Product code: 50178530)



Option 3. Control LED receiver CV 5ZD with a RF remote and push switch



How to install LED Dimmer CV 5ZD

Turn off the main switch.

1. Connect 12V or 24V DC LED power supply to V- and V+ INPUT on the receiver.

Please note!

- Never connect the receiver directly to a battery. Always use a DC-DC converter.
- Always connect all output wires of the power supply to the receiver.
- Connect only one power supply to each receiver.

2. Connect LED light

Connect two conductor wire of LED light to output LED + and -.

3. Connect Push switch

Connect two conductor wire of push switch to the receiver (as shown in the image).

Please Note! Do not connect the Push switch to 230V or a different kind of power supply.

Connect remote control to receiver

Turn on the main switch.

- A. Remove the plastic tag from the battery on the back of the remote. Please Note: Avoid touching the battery with bare hands while removing the tag.
- B. Press and hold the learning key on the receiver for 5 seconds, to erase its memory.
The light will flash twice to confirm.
- C. Press 1/4 second (very short click) on the learning key.
- D. Press immediately afterwards (also a short click) the ▼ or ▲ button on the remote to connect the receiver to a zone. The LED light will flash once to confirm. The receiver is now connected to a zone.
- E. Repeat steps B and C to link multiple receivers to the remote control.

Features:

- Multiple receivers can be connected to one zone. All receivers linked to a zone, respond simultaneously.
- One receiver can be linked to multiple zones.

Dimming

- E. Press and hold the ▼ or ▲ button on the remote to change the light intensity. All receivers in a zone will respond simultaneously.

Switching on/off

- F. Press the ▼ or ▲ button on the remote to switch the light on and off. All receivers in a zone will respond simultaneously.
- G. Press the ON or OFF button on the remote to switch all the connected light at the same time.

Memory

- H. On the remote there are 2 memory keys: M1 and M2. After you have set the correct dimm level, you can save it by holding the memory key for a few seconds. The lights will flash once to confirm.
- J. If one or more zones in a memory setting are switched off, please press and hold the ▲ key in the relevant zone to switch on the LED lights. Please note: this will not automatically be saved in the memory
- I. Repeat step H to change memory setting.

Reset

Press and hold the learning key on the receiver for 5 seconds to erase its memory. Repeat steps B-C to reconnect the receiver to the remote.