



BATTERY COMPARISON

TRIPLE
POWER

[5.8 kWh LFP]

&

 **PYLONTECH**

[US2000]

INSTALLATION



EASY
INSTALLATION



PLUG & PLAY



FLEXIBLE MOUNTING
(FLOOR & WALL)

TRIPLE
POWER



Single Phase Inverter



Three Phase Inverter

- Single Phase Inverter:
5.8kWh - 17.4kWh (1-3 Triple Power Batteries)
- Three Phase Inverter:
11.6kWh - 23.2kWh (2-4 Triple Power Batteries)

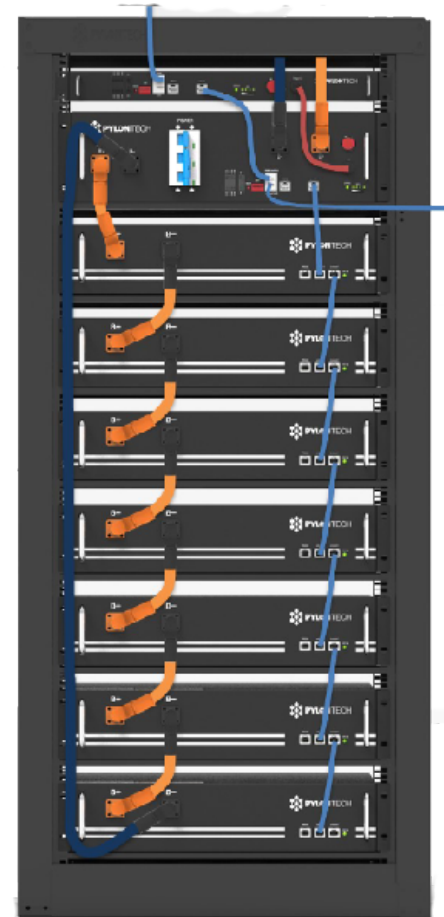
INSTALLATION



COMPLEX
INSTALLATION

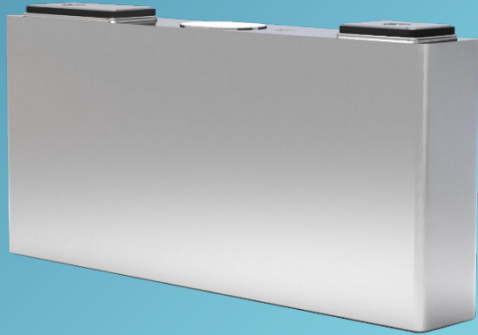


ONLY
FLOOR MOUNTING



BATTERY CORE

TRIPLE
POWER



ALUMINUM SHELL BATTERY

- Explosion-proof safety valve applied

 **PYLONTECH**

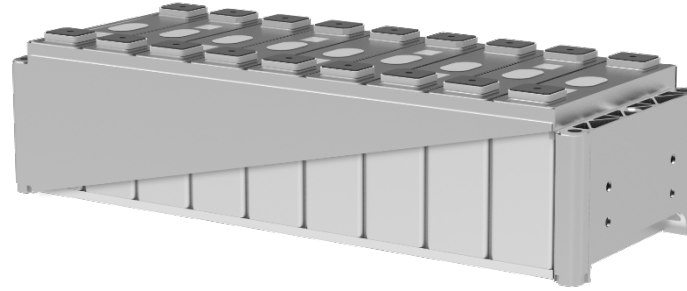


SOFT BAG BATTERY

- No explosion-proof safety valve

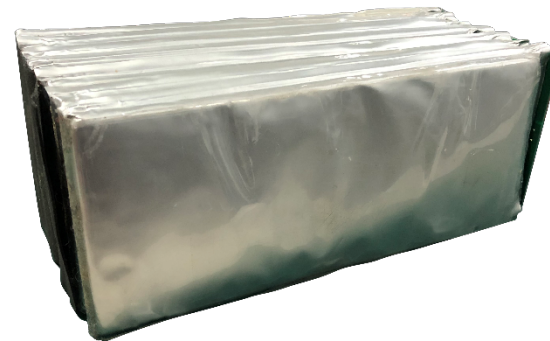
BATTERY MODULE

During charge and discharge, lithium atoms are removed from and inserted into the active materials in a cell, causing the materials to shrink and expand.



ALUMINUM SHELL BATTERY

There is space between the cells in the module, so the expansion of a single cell does NOT affect other batteries.



SOFT BAG BATTERY

The cells in the module are stacked together, there is no space between them, so the expansion of individual cells will affect each other.



TRIPLE
POWER

Support cloud upgrade and maintenance



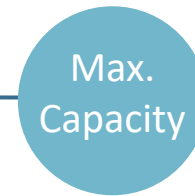
 **PYLONTECH**

Need to upgrade and maintenance on site



5.8kWh

23.2kWh with 4pc. in parallel



2.4kWh

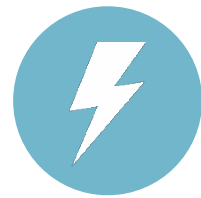
16.8kWh with 7pc. in rack

TRIPLE
POWER

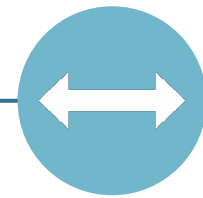
90V - 524V

IP55
Dustproof and
waterproof

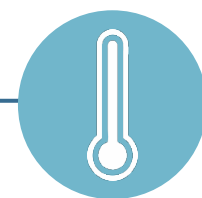
55°C



voltage
range



protection
level



highest working
temperature

 **PYLONTECH**

80V - 383V

IP20

50°C

TRIPLE
POWER

6000

10-Year

- Thickness 1.5mm
- Shock proof
- Vibration resistant
- Anti-earthquake
- Vehicle level safety



cycle
life



warranty
year



safety

 **PYLONTECH**

6000

5-Year

Thickness 1.2mm

SPECIFICATION

	Triple Power	PylonTech
Nominal Voltage [V]	115.2	48
Operating Voltage [V]	100-131	45-54
Nominal Capacity [kWh]	5.8	2.4
Usable Capacity [kWh]	5.2	2.2
Standard Power [kW]	2.9	1.2
Humidity [%]	4-100	5-85
Weight [Kg]	70	24
Discharge Voltage [V]	100-131	45-53.5
Charge Voltage [V]	100-131	52.5-53.5